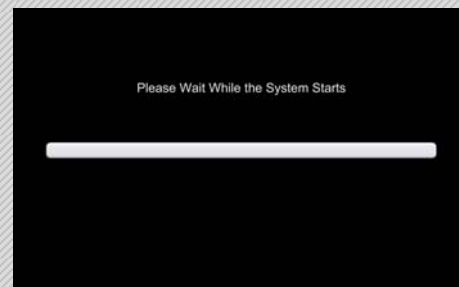
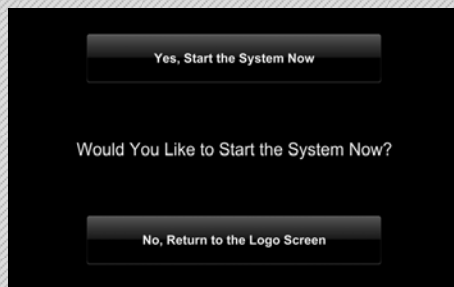


QUICK REFERENCE GUIDE

For detailed instructions, please consult your User Documentation Disc. The *Operations Manual* details the operations of your system. For information on individual pieces of equipment, please reference the *Component Library*.



The first screen displayed on your system is the **LOGO PAGE**.

Press [TOUCH HERE TO CONTINUE] where you will have the option of starting the system or returning to the **LOGO PAGE**.

Press [YES] to start the system.

Press [NO] to return to the **LOGO PAGE**.

If you press [YES] the page shown above will appear and the system will start up. The shut down procedure is similar to the procedure described.

When the power sequence is complete, the System Reset page will appear while the system resets all of the default settings. After the reset sequence is complete, the Main Menu page will appear.



The **MAIN MENU** allows quick access to individual control pages. Press any one of the menu buttons that appear on the right side of the **MAIN MENU PAGE** to access related control pages.

The current Time and Date are displayed in the left and right top corners of this page.

A Shut Down button at the bottom of this page allows you to power off the entire system.

AUDIO CONTROLS allow you to raise/lower/mute evidence audio and reset default audio levels. You can also access individual level adjustments.

INDIVIDUAL LEVEL ADJUSTMENTS allow you to raise/lower/mute courtroom microphones and auxiliary audio sources.

If the courtroom audio system is off or *Bench Conference* mode is active, you will not be able to adjust any of the microphones.



VIDEO SOURCES allow you to choose the video evidence source that you want to display on the courtroom display devices. Some locations have more than one source available and will display a popup window with various selections available at that location.

[MUTE VIDEO] allows you to turn on/off gallery, witness, or all video. Use [SHOW TO ALL] to display evidence to everyone in the courtroom.



PHONE CONFERENCE allow you to conduct an audio conference within the courtroom. Audio from the party you call can be heard on the courtroom speakers and the party you call will hear all of the courtroom microphones and auxiliary audio sources. Volume controls allow you to adjust the audio level *to* and *from* the party you are connected with.

Note: This page is password protected.



VIDEO CONFERENCE CONTROLS allow you to conduct and control a video conference. Use the keypad buttons to enter the number you wish to dial in the on-screen dial window. After entering the number you wish to dial, press [CALL] to begin the call process.

There are shortcut buttons on this page that display additional pages for camera control and video source selection. Additional buttons allow you to select which camera is displayed to the Far-End party during a videoconference.



VTC SOURCES allow you to choose the video source(s) that you want to display to the Far End. You can choose a single source or a combination of sources, while selecting which evidence source you would like to display.

Choosing Document Camera will display the DOCUMENT CAMERA CONTROLS.



CAMERA CONTROLS allow you to select one of the cameras and adjust its position. You can pan, tilt, zoom, adjust the focus or activate auto focus, and store and recall presets for all courtroom cameras.



AUXILIARY CONTROLS allow you to use bypass annotation, activate/inactivate auto shutdown, and check UPS status.

If your system needs repair, call us and we will arrange service as soon as possible. Dial '0' for the operator and ask to speak with the *Service Coordinator*. For warranty coverage, do not call a local service provider directly: QUANTUM will arrange all necessary service.



991 Discovery Drive · Huntsville, Alabama 35806 · 256.922.1200 · info@qtiav.com